

PART OF THE N. 1/2 OF THE N.W. 1/4 OF THE S.W. 1/4, SEC. 28, T.6N., R.2W., S.L.B. & M.

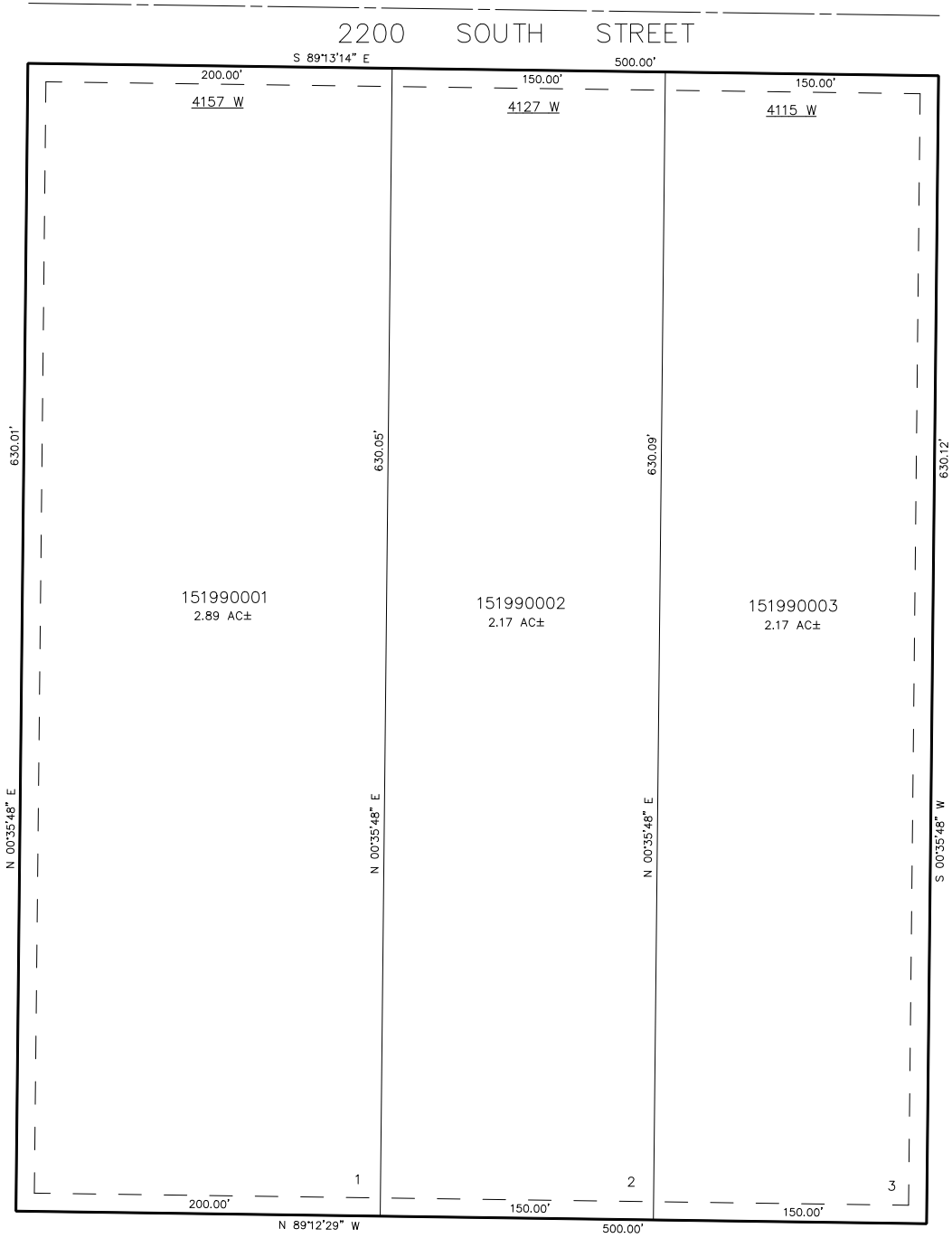
GIBSON ACRES SUBDIVISION

IN WEBER COUNTY

TAXING UNIT: 53

SCALE 1" = 50'

SEE PAGE 78-3



SEE PAGE 78-3

SEE PAGE 78-3

10' UTILITY & DRAINAGE EASEMENTS EACH  
SIDE OF PROPERTY LINES AS INDICATED  
BY DASHED LINES EXCEPT AS OTHERWISE  
SHOWN.

SEE PAGE 78-3

FOR COMPLETE ENG DATA SEE  
ORIGINAL DEDICATION PLAT IN  
BOOK 39, PAGE 90 OF RECORDS.